

HyperLink Wireless brand 5.8 GHz 23 dBi Broadband WLAN Flat Patch Antenna

Applications and Features

Applications:

5.4-5.8 GHz Frequency Range:

(5470-5725 MHz, 5725-5850 MHz)

- ◇ 5.8GHz UNII applications
- ◇ 5.8GHz ISM applications
- ◇ 5.8GHz Wireless LAN systems
- ◇ 5.8GHz WiFi application
- ◇ 5.8 GHz Wireless Video Systems

Features:

- 23 dBi
- Light weight
- All weather operation
- Heavy-duty radome
- DC Short lightning protection
- Integral N-Female Connector
- Can be installed for either vertical or horizontal polarization
- Includes tilt and swivel mast mount
- RoHS Compliant



Description

Superior Performance

This low cost and compact flat patch broadband antenna is designed to operate from 5.1 GHz to 5.8 GHz (5150-5850 MHz). The wide band design of this antenna eliminates the need to purchase different antennas for each frequency. This simplifies installations since the same antenna can be used for a wide array of wireless applications. The antenna's low profile only measures .75" (19mm) thick and combines 23 dBi gain with broad coverage. It is suitable for both indoor and outdoor applications. This antenna can be oriented for either vertical or horizontal polarization.

Rugged and Weatherproof



This broadband antenna features a heavy-duty UV-stable white fiberglass radome for all-weather operation. The HG5158-23P antenna is supplied with a tilt and swivel mast mount kit. This allows installation at various degrees of incline for easy alignment.

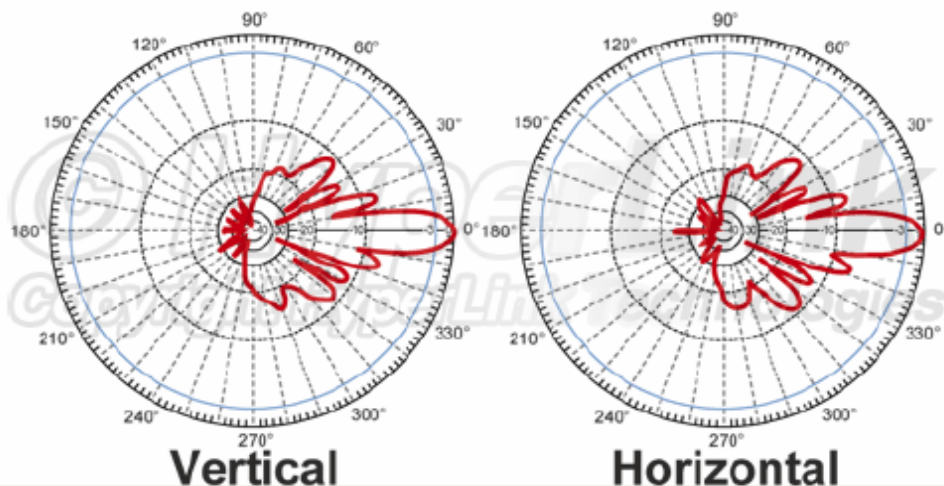
Specifications

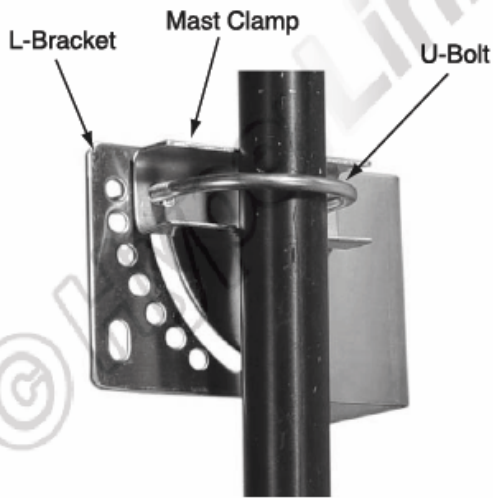
Frequency	5150-5850 MHz
Gain	23 dBi
Horizontal Beam Width	11°
Vertical Beam Width	11°
Polarization	Vertical or Horizontal
Impedance	50 Ohm
Max. Input Power	50 Watts
VSWR	< 1.5:1 avg.
Lightning Protection	DC Short
Connector	Integral N-Female
Weight	3.27 lbs. (1.5 Kg)
Dimensions	12 x 12 x .75 inches (305 x 305 x 19 mm)
Radome Material	UV-Stable Fiberglass
Operating Temperature	-40° C to to 85° C (-40° F to 185° F)
Mounting	1.25 in. (32 mm) to 2 in. (50 mm) O.D. pipe max.
Rated Wind Velocity	130mph (210km/h)
RoHS Compliant	Yes

Wind Loading Data

Wind Speed (MPH)	Loading
100	32 lb.
125	51 lb.

RF Antenna Patterns



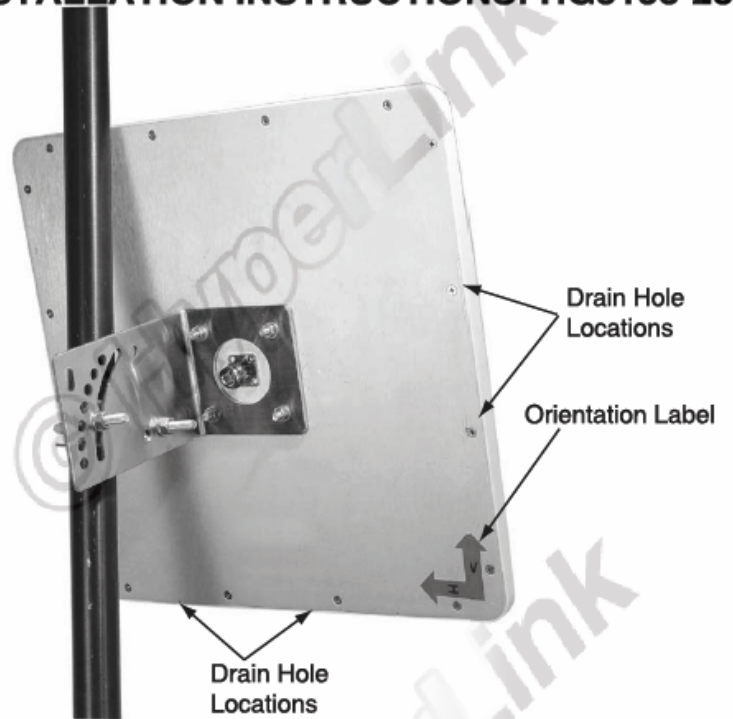


(Shown for Down-Tilt Mounting)

Mounting

This antenna can be mounted in a up or down tilt position based on how the L-Bracket is attached to the mast. The above photo shows the correct orientation for down-tilt mounting (for up-tilt, rotate L-Bracket 180 degrees).

Attach the L-Bracket to mast using supplied U-Bolt and hardware. This mounting kit can be used with masts 1.25" (32mm) to 2" (50mm) O.D.



Vertical or Horizontal Polarized Mounting

This antenna can be vertical polarized or horizontal polarized mounted. To mount antenna, attach to L-Bracket as shown using supplied hardware. Note orientation label on rear of antenna for proper mounting.

To help prevent moisture build-up inside the antenna, drain holes are provided. To ensure proper draining, these holes must be orientated on the bottom of the antenna as shown.